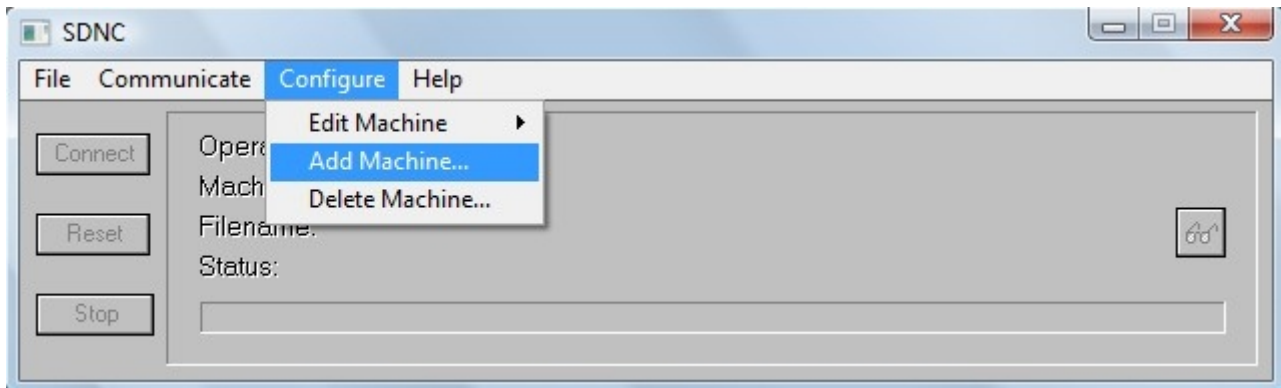
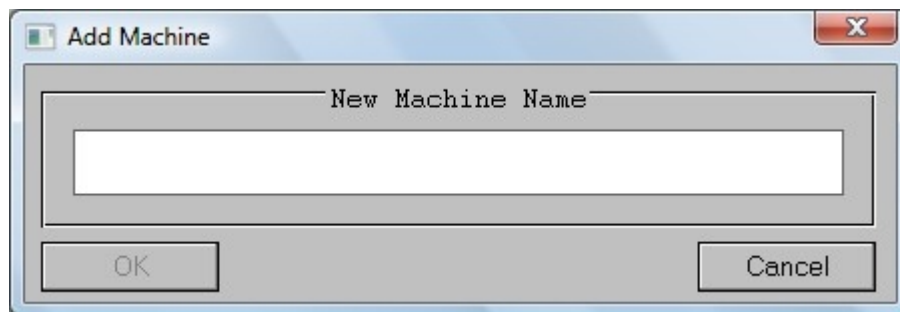


SDNC

**To add machine (If you cant get your machine in the default list):**

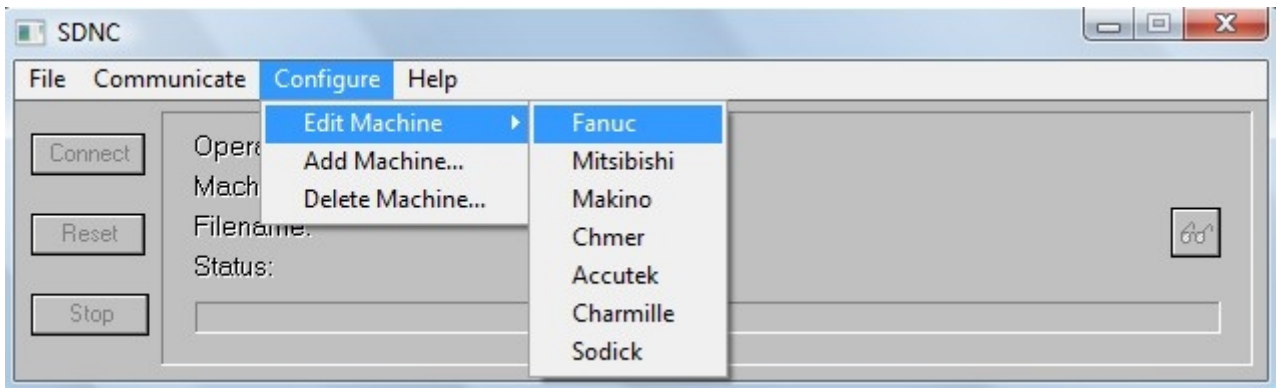


Click on Configure > Add machine

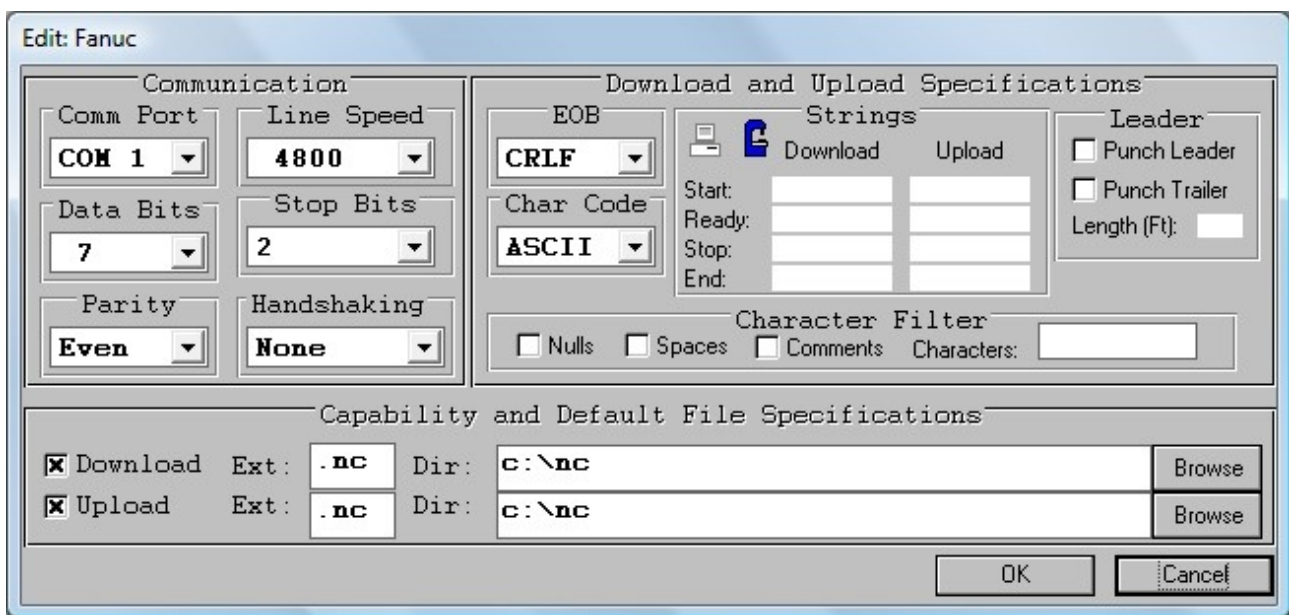


Type in New Machine Name (exp: Fanuc, Mitsubishi, etc)

## To configure machine

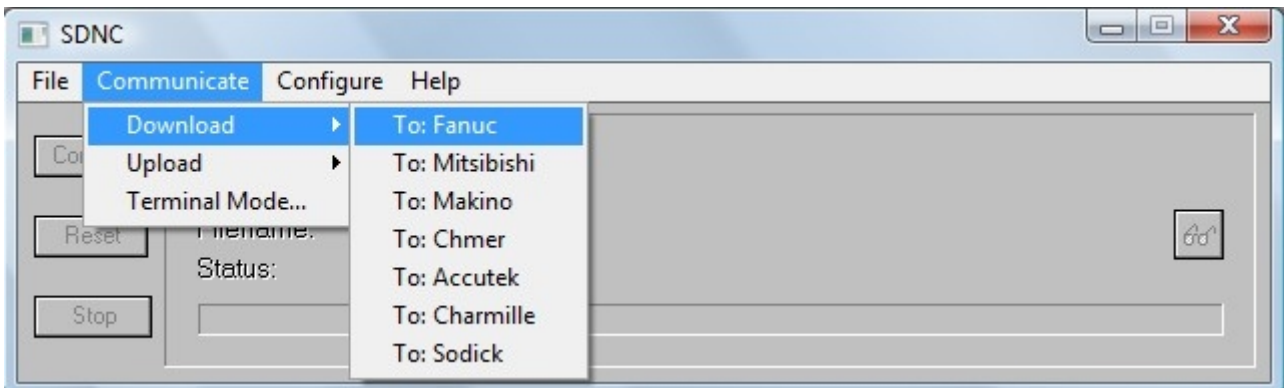


Click on Configure > Edit Machine > Choose your machine name

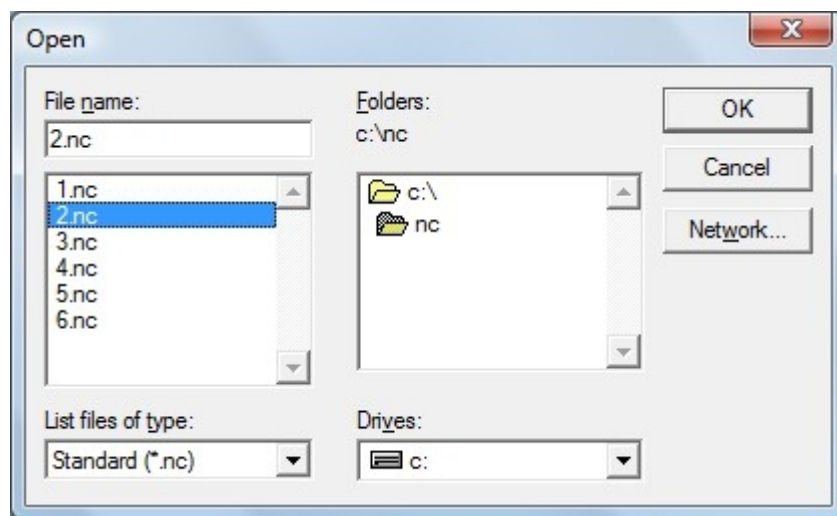


Edit the setting according to your machine's preset value.

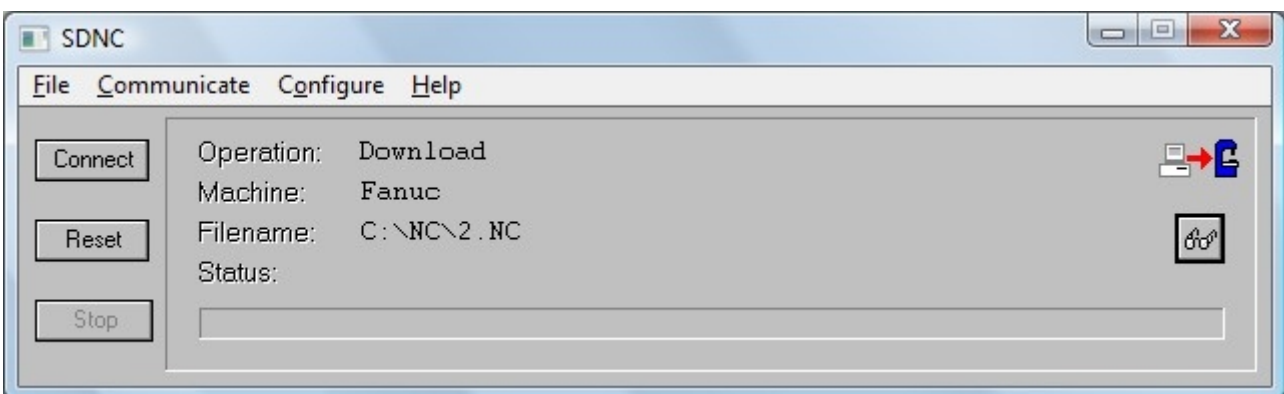
## NC Program transferring from PC to Machine



Click Communicate > Download > Choose your machine name



Select the NC file and click OK.



Get your machine ready to receive the file, Click Connect button, and then complete it by clicking transmit on the same button again.