

SP3 3D SOLID PRINTER

The **3D Solid Printer** is a desktop 3D printer that actually fits on your desk. The **3D Solid Printer** is an office friendly, network compatible peripheral that allows you to build your three-dimensional models directly from 3D CAD data, right at your workstation.

Early stage concept modeling and multiple design iterations are no longer cost prohibitive. The immediate feedback from colleagues and customers will help to improve design communication and ensure a smooth transition to development. Streamline your design cycle by putting model creation in the hands of the creators, the designers themselves.



With the unique **3D Solid Printer**, it is now possible to produce more models, more often, on your own schedule and at a lower cost. With the **3D Solid Printer**, early stage concept modeling and multiple design iterations are no longer cost prohibitive. The immediate feedback from colleagues and customers saves valuable time in the early identification of design issues, and ensures a smooth transition through the later stages of product development. The **3D Solid Printer** will significantly trim your design and development cycle by improving the communication throughout the process.

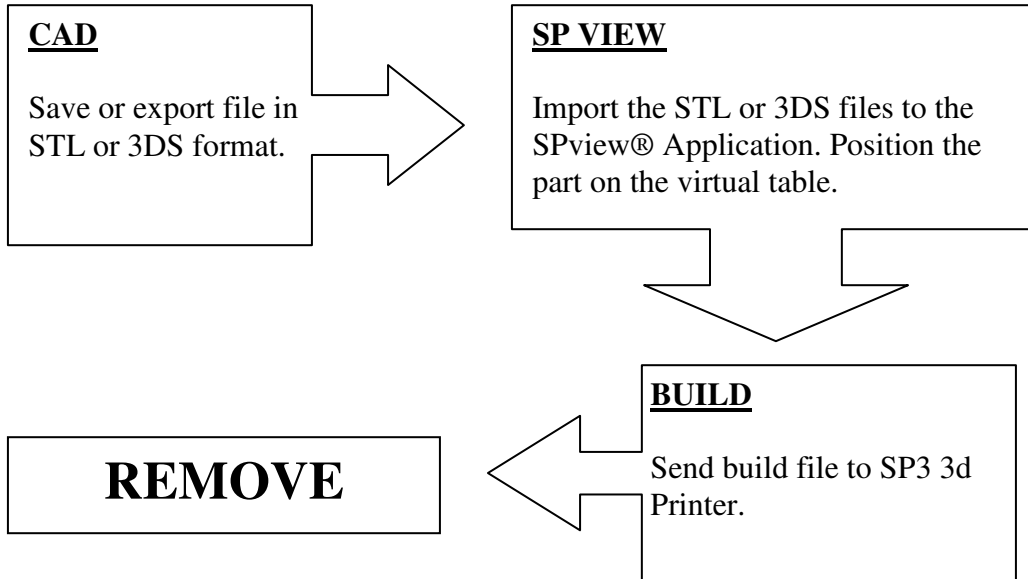
Specifications

- Build material – Engineered plastic
- Material color – amber transparent
- Maximum model size – 160 W, 210 L, 135 H
- Accuracy – 0.2 mm (x,y); 0.3 mm (z)
- Input file formats – STL
- Minimum wall thickness –1 mm



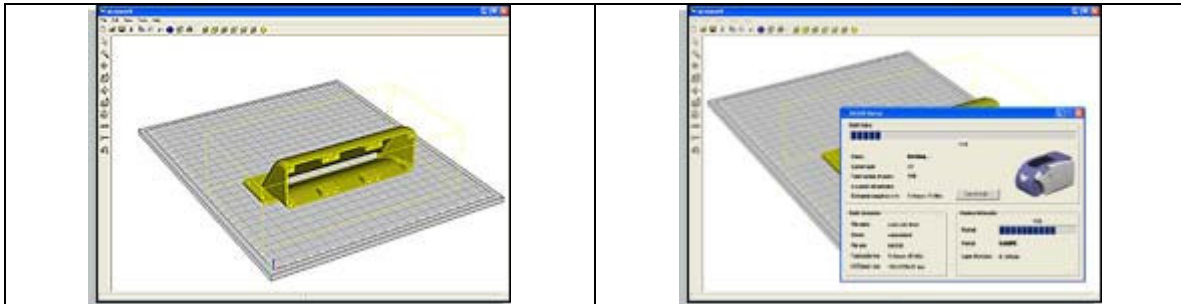
The Workflow

The *SP3 3D Solid Printer* allows you to incorporate the model build process into your workflow with ease.



SPview Software Application

The SP3 3D Solid Printer's robust front-end software, **SPview®**, is an intuitive, feature-rich, windows-like application that supports both STL and 3DS input files. **SPview®** enables the user to manipulate and edit the parts prior to build.



SolidVC Material Kit

Each SolidVC Material Kit includes 7.5 Kg. of build material. The materials are balanced so that all materials are replenished simultaneously.



Contents

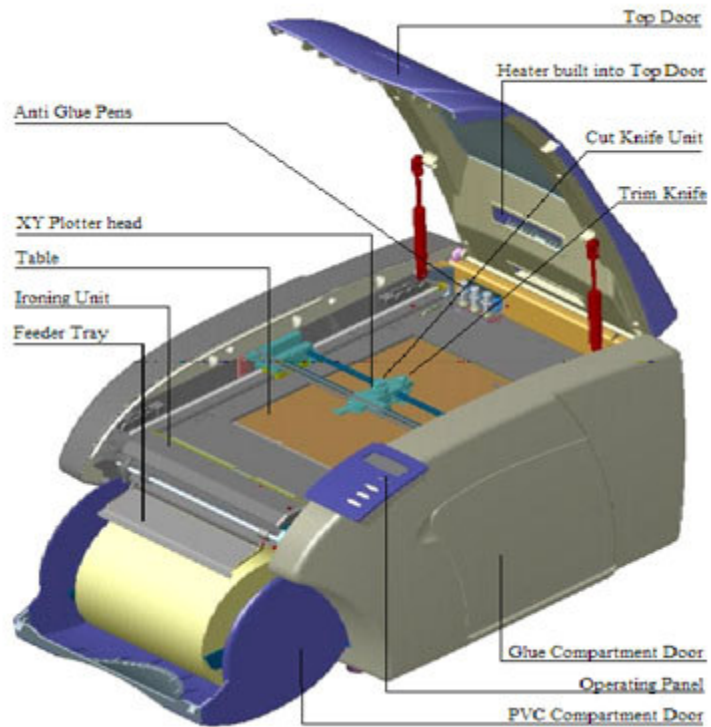
- 1 X Roll SolVC-105
PVC Sheet
- 1 X Cartridge
SolGL-101 Adhesive
- 1 X Cartridge
SolAG-154 Release Agent

Shipping Information:
Dimensions – 300mm x 300mm x 220mm
Weight – 9 Kg.

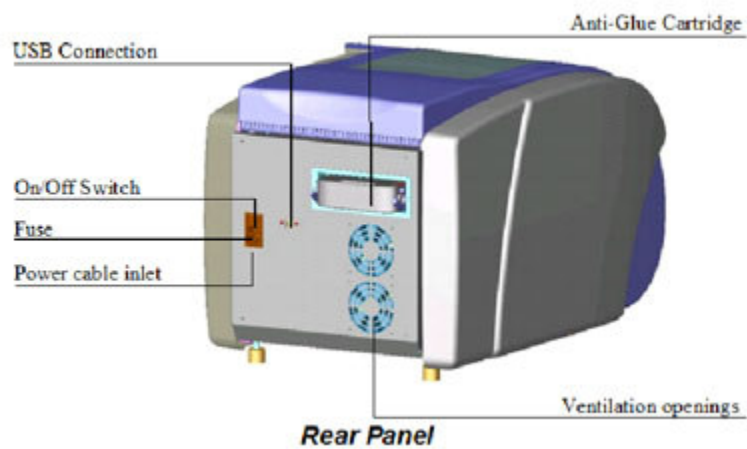
* SolidVC Material Kit contents and packaging are subject to change.

SP3 3D Solid Printer Components and Parts

- Top door
- Side covers
- Material compartment doors
- Heating system
- Operating panel
- Feeder tray
- Ironing unit
- Work table
- XY Plotter head
- Cutting knife
- Trim knife
- Anti Glue pen station



- On/Off Switch
- Fuse
- Power cable inlet
- USB Connection
- Ventilation openings
- Anti Glue Cartridge



Data Sheets

General Specifications

Technology	3D printing - plastic sheet lamination
Build material	PVC
Material color	Amber (transparent)
Accuracy	+/- 0.2 mm (XY)
Layer thickness	0.165 mm (Z)
Maximum model size	170 x 220 x 145 mm (XYZ)
Dimensions	W450 x D725 x H415 mm
Weight without cartridge and roll	30 Kg
Weight with cartridge and roll	40 Kg
Power consumption	300 VAC, 47/63 Hz, 100-120/200-240 VAC

SPview® Software

Language	English
Input File Formats Supported	STL, 3DS
Output File Format	SDM (Proprietary)
Platforms Supported	Windows 2000, XP

PC Minimum Requirements

Processor	Pentium III, 500Mhz
RAM	128MB
HD	10MB
Interface	USB

SolidVC® Material

- Rigid polyvinyl chloride compound
- Constructed of a plurality of rigid PVC sheets
- Bonded with liquid adhesive

Properties	Condition	Value
Appearance		Transparent, amber
Density, g/cm ³	25°C	1.38
Tension strength, MPa	ASTM D 638 25 °C	40 - 50
Elongation at break, %	ASTM D 638 25 °C	30 - 100
Tensile modulus	MPa ASTM D 638, 25 °C	1200 - 2000
Heat deflection temperature, °C	ASTM D 648@ 264 psi	45 - 55

*Specifications are subject to change